

Editing Video Using Movie Maker

Connecting Camera to Computer.....	2
Importing Raw Video.....	3
Editing Video.....	5
Adding Transitions.....	8
Adding Special Effects.....	10
Saving Movie to Computer.....	12
Saving Movie to CD for Student Tchnng/Methods/Cohort.....	14
Burning Movie to CD	16

Connecting Camera to Computer

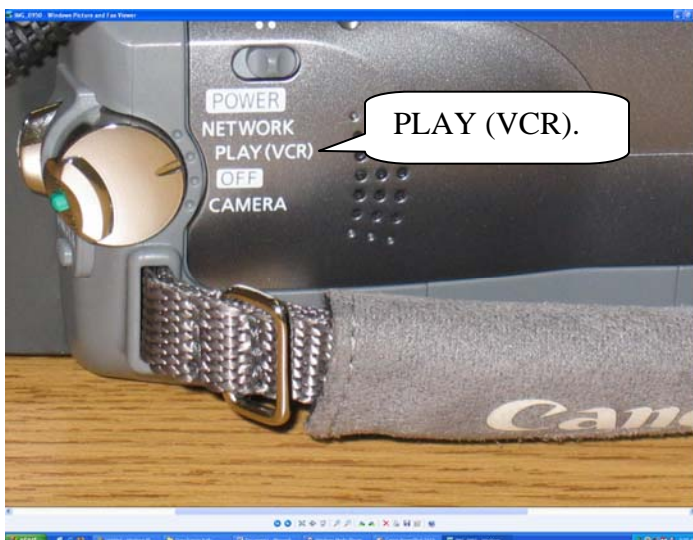
Connect the fire wire cable to the back of the computer.



1. Connect the fire wire cable to the video camera.

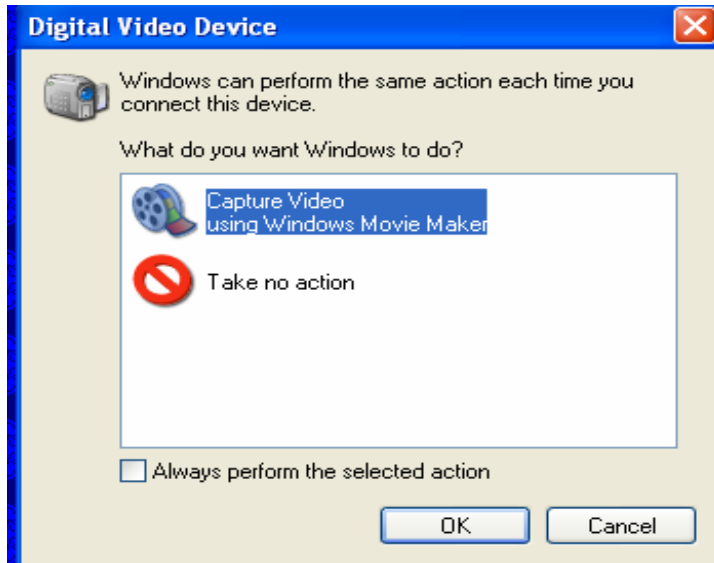


2. Set the video camera to PLAY (VCR) mode.

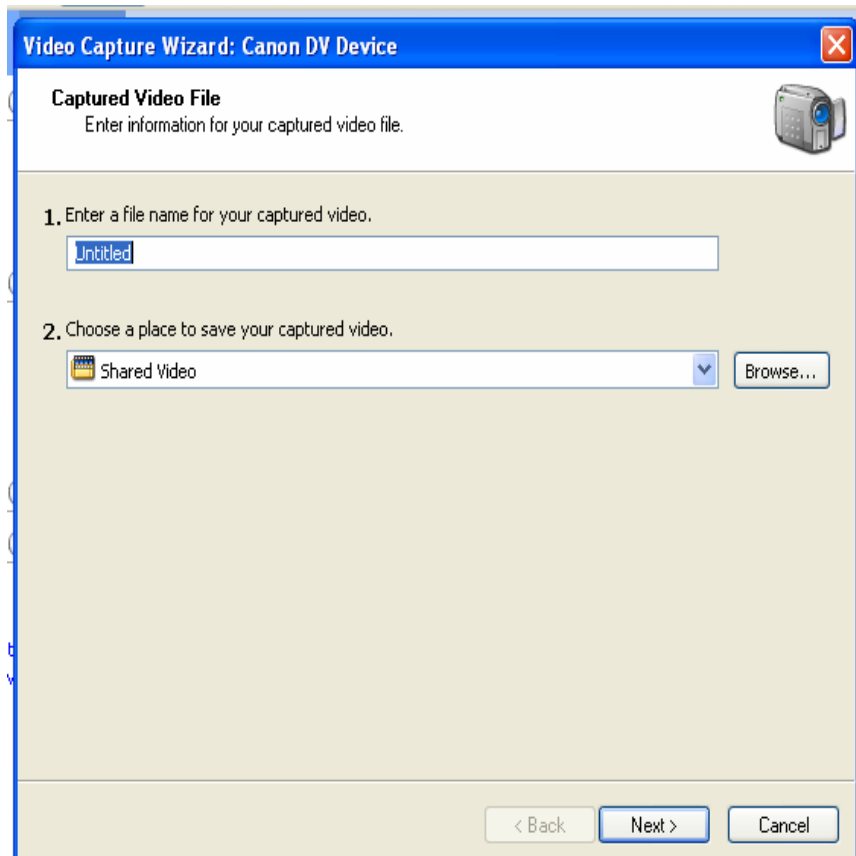


Importing Raw Video

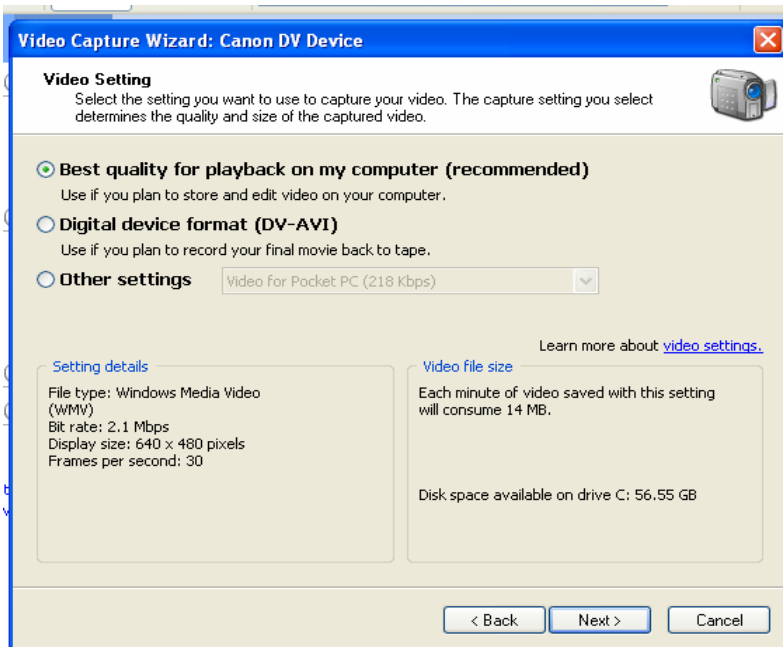
3. The window below will appear; select **Capture Video using Windows Movie Maker**. Then click **OK**.



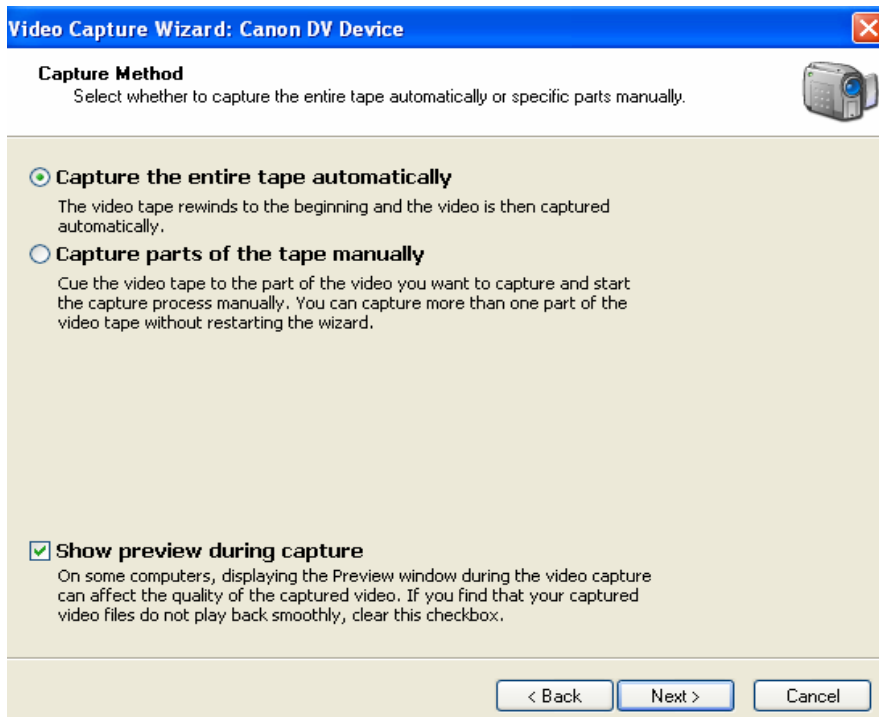
4. Microsoft Windows Movie Maker starts the Video Capture Wizard. On the **Capture Video File** page, type a name for the video project. Then click **Next**.



6. On the **Video Setting** page, accept the default settings by clicking **Next**.

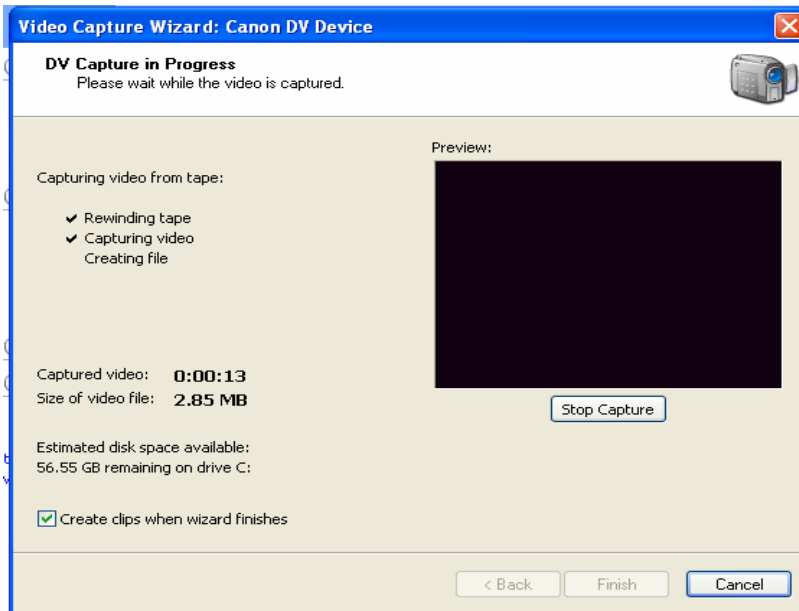


5. On the **Capture Method** page, click **Next**. It's easiest to capture the entire tape at once; if sections remain that will not be needed, they can be deleted later.



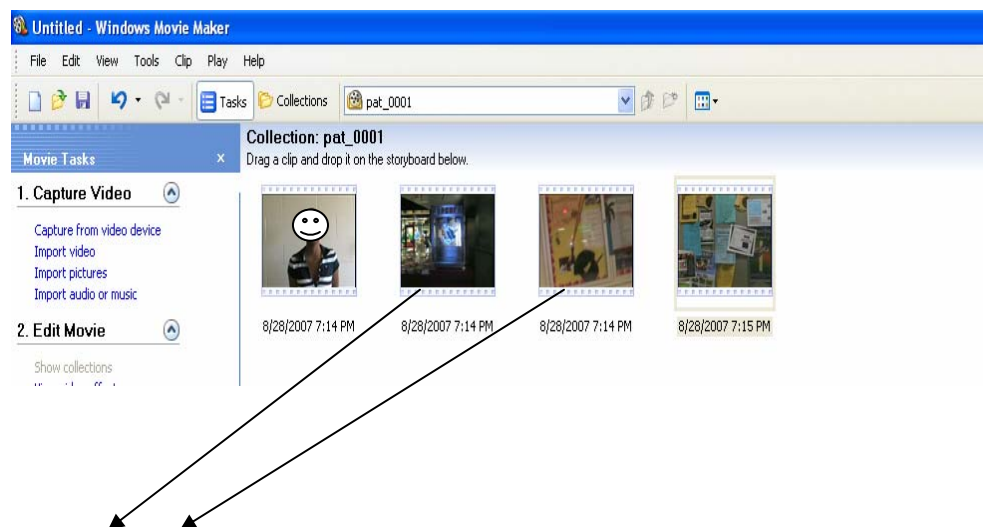
- The Video Capture wizard rewinds the tape and then begins capturing it. The tape will be captured in **real time**. The video will be playing in the Preview window and the audio can be heard through the speakers/headphones. The wizard always scans the entire tape, even if a few minutes of video have been recorded. When the end of the video has been reached, click the **Stop Capture** button then click **Yes**.

Movie Maker automatically breaks the movie into clips and adds the clips to a video collection with the name provided. The video is now ready to edit if needed.



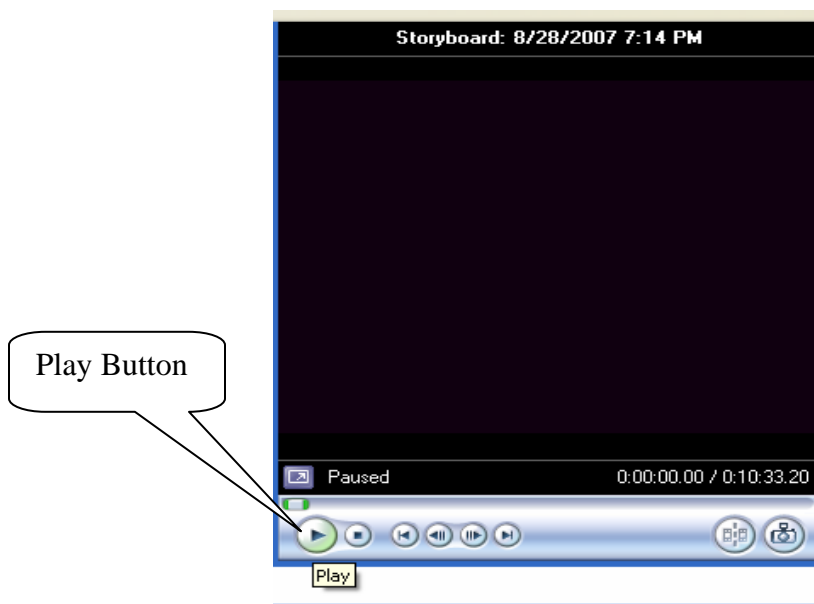
Editing video

- Drag clips from the collection to the storyboard at the bottom of the window.

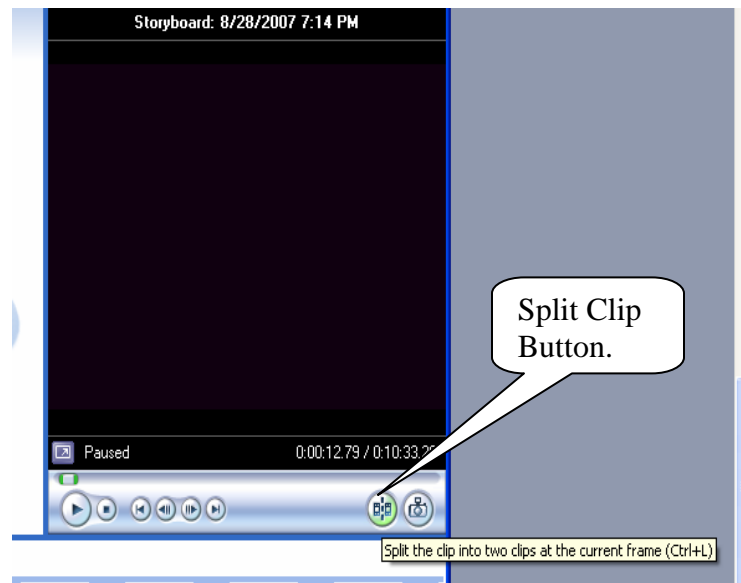




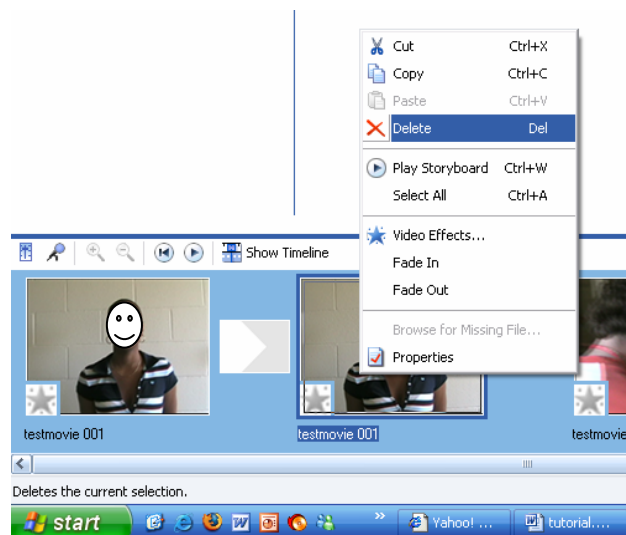
2. Select the clip that needs editing. Click the **Play** button on the **Preview Monitor**.



3. Let the clip play until it gets to the point of editing. Next click the **Split Clip** button on the **Preview Monitor**. This cuts the clip into two separate clips at the current point in the video and adds the new clip to the story board.

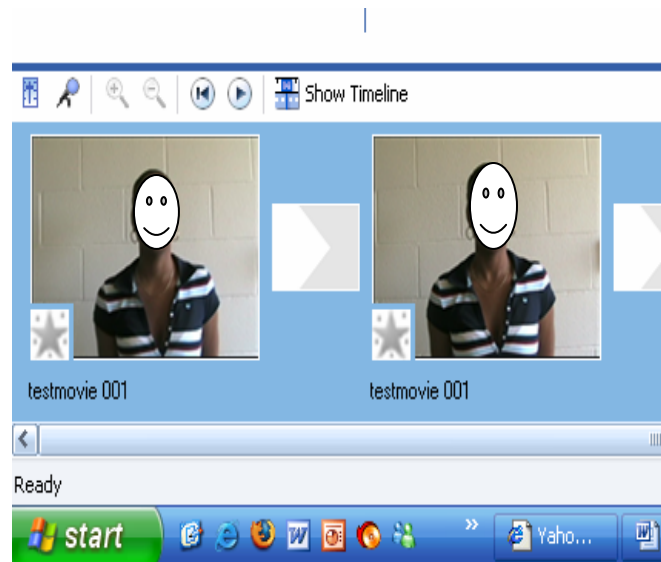


4. Delete the portion of the clip no longer needed by right-clicking it and then clicking **Delete**.



5. Repeat this process for each clip. Clips can be split several times to use more than one moment from a clip. If a lot of editing is necessary, it might be easier to use the timeline view, which shows how long to play each clip. To use the timeline view, click the **Show Timeline** button.

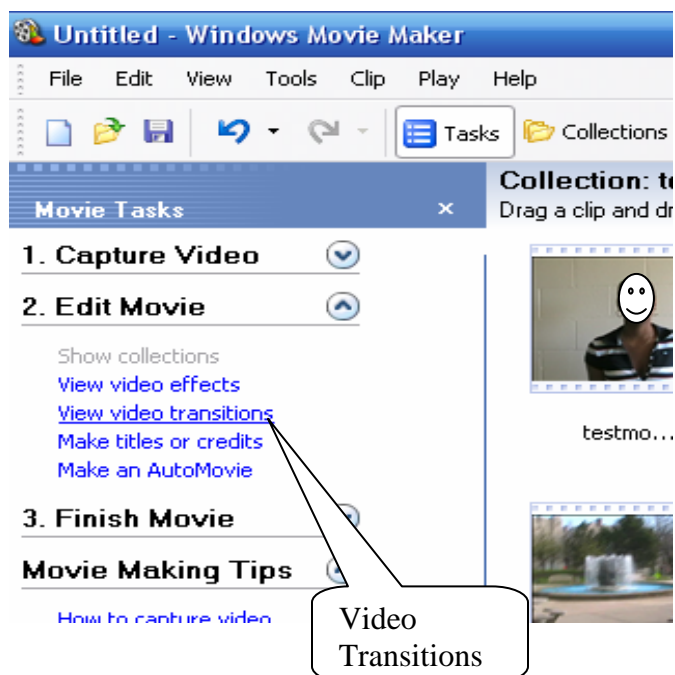
Show Timeline
button



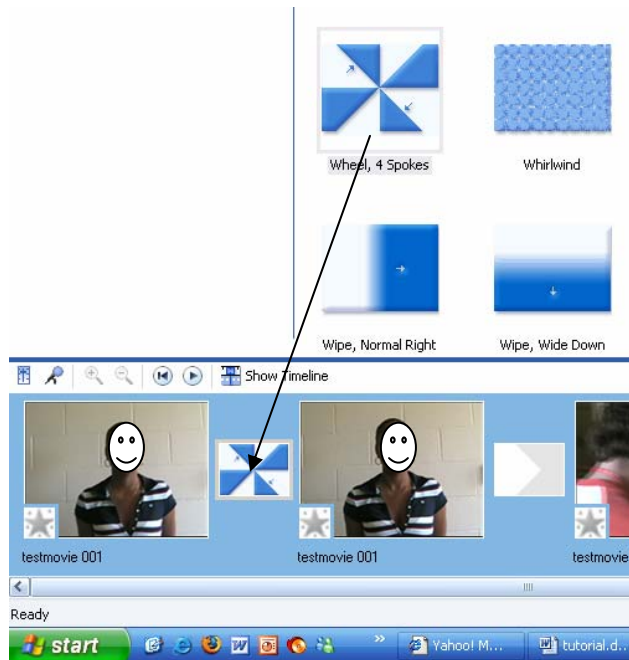
Adding Transitions

Transitions control the way one clip or picture in the movie moves to the next clip. Movie Maker uses transitions to insert fades, flips, dissolves, and other dramatic shifts between scenes.

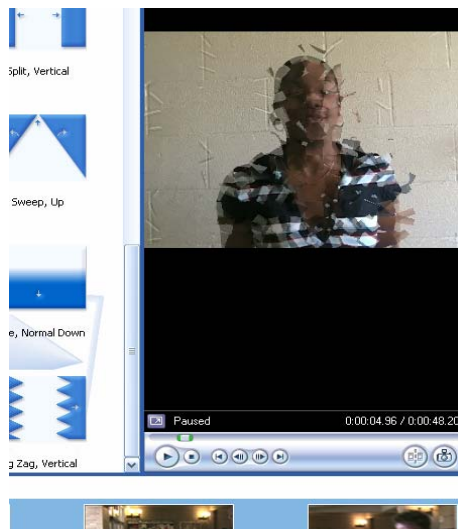
1. In the **Movie Tasks** pane, under Edit Movie, click View video transitions.



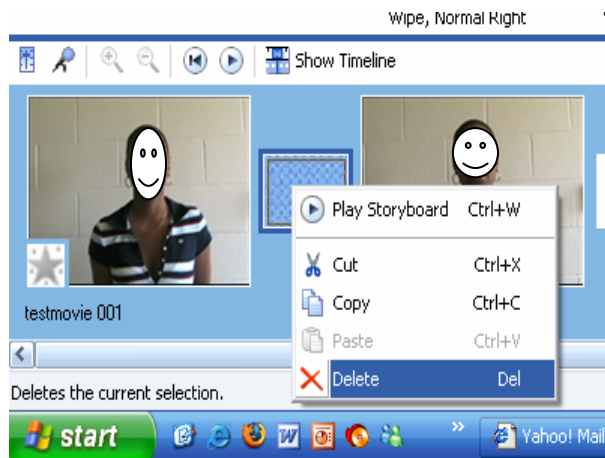
- Preview transitions by double-clicking them and watching the Preview Monitor. Once a transition has been found, drag it to the box between two clips. This inserts the transition between the two clips.



- In the Preview Monitor, click the **Video Transitions** pane under the **Play** button to watch the transition in action.



- Transitions can be deleted by right clicking on the story board and click **Delete**.

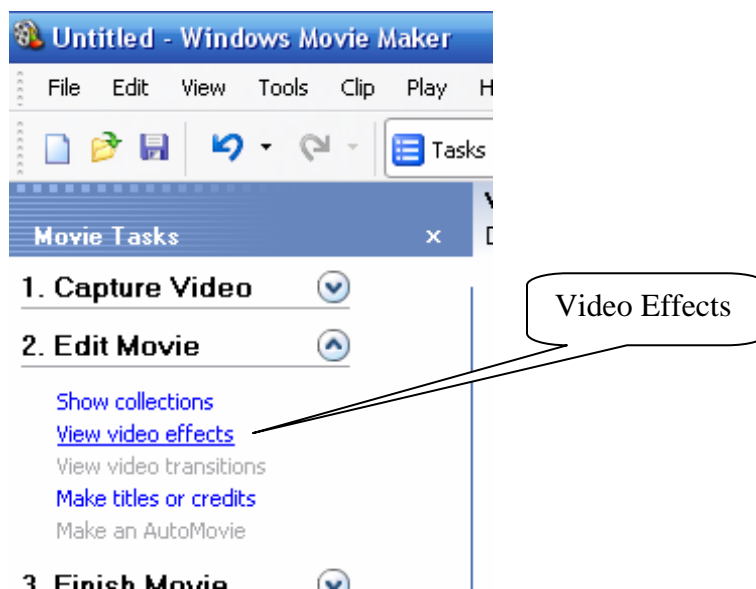


Note:

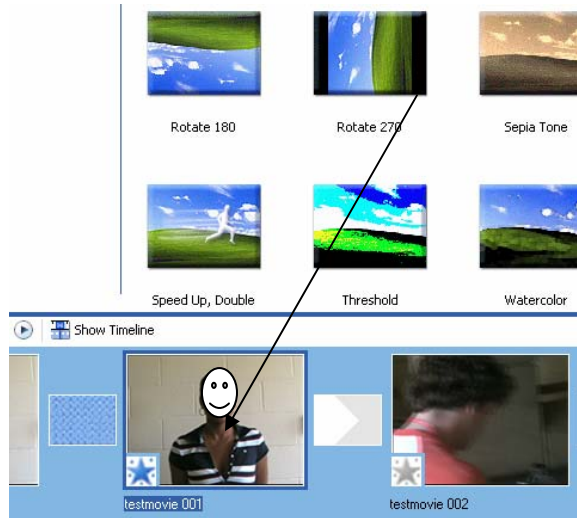
Transitions cause video clips to overlap by about one second, which means some video could be lost between the transition. When filming, it is good to start the camera a few seconds before the action starts and to keep filming for a couple of seconds afterward so that there will be lapsed time between transitions. This also helps to get a steadier shot. If extra time is not needed in a clip, it can be trimmed from the clip in Movie Maker.

Adding Special Effects

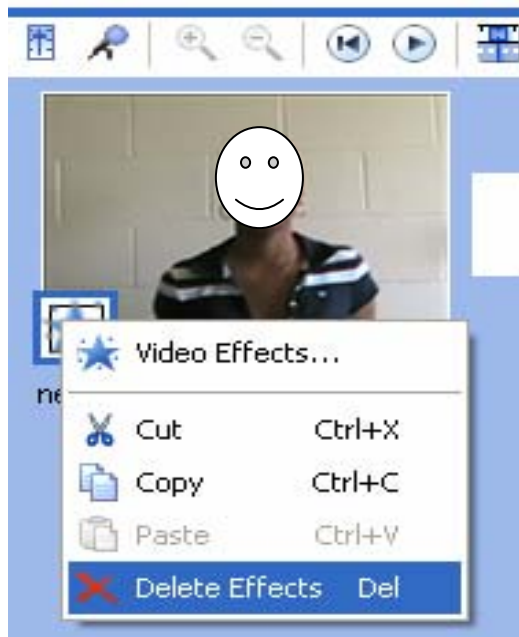
- Special effects change the appearance of a video clip by rotating it, slowing it down or speeding it up, or making it appear like old film footage. Like transitions, special effects can be added easily by dragging the relevant special effect icon onto the movie timeline.
1. In the **Movie Tasks** pane, under **Edit Movie** click **View video effects**.



3. Preview effects by double-clicking them and watching the Preview Monitor. Once an effect has been found, drag it from the **Video Effects** pane to one of the clips. This adds the effect to the clip, which can be seen by looking at the star in the lower-left corner of the clip.

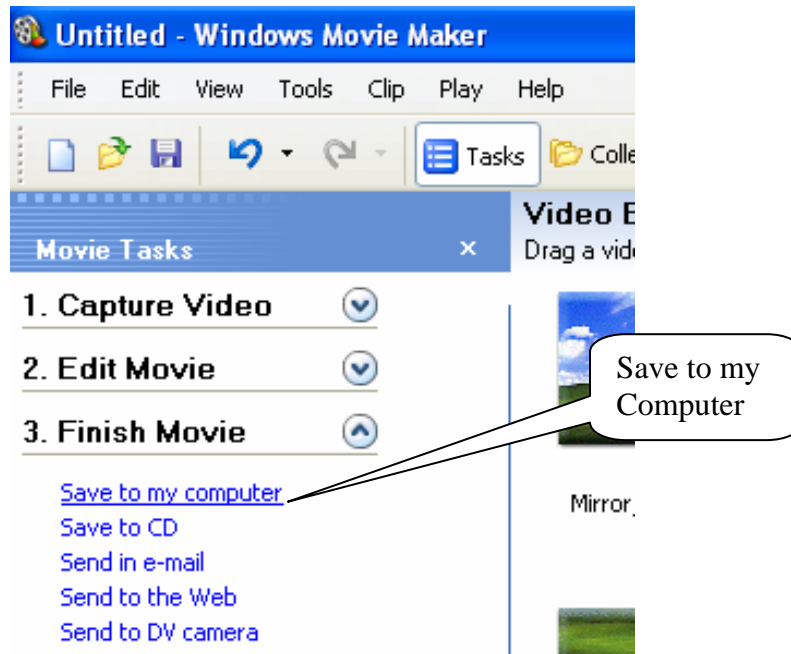


4. In the Preview Monitor, click the **Play** button to watch the effect in action. The effect can be deleted by right clicking the **star** icon in the lower left corner of the clip and click **Delete Effects**.

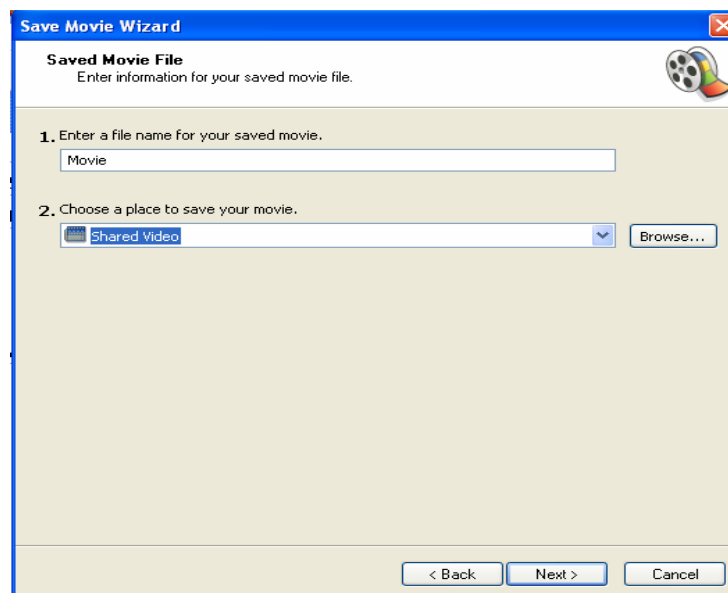


Saving Movie to Computer

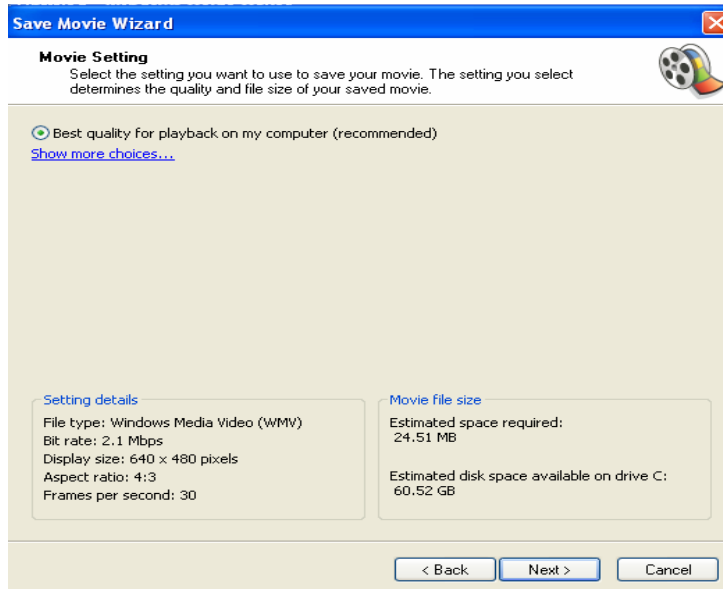
1. In the **Movie Tasks** pane, under **Finish Movie**, click **Save to my computer**.



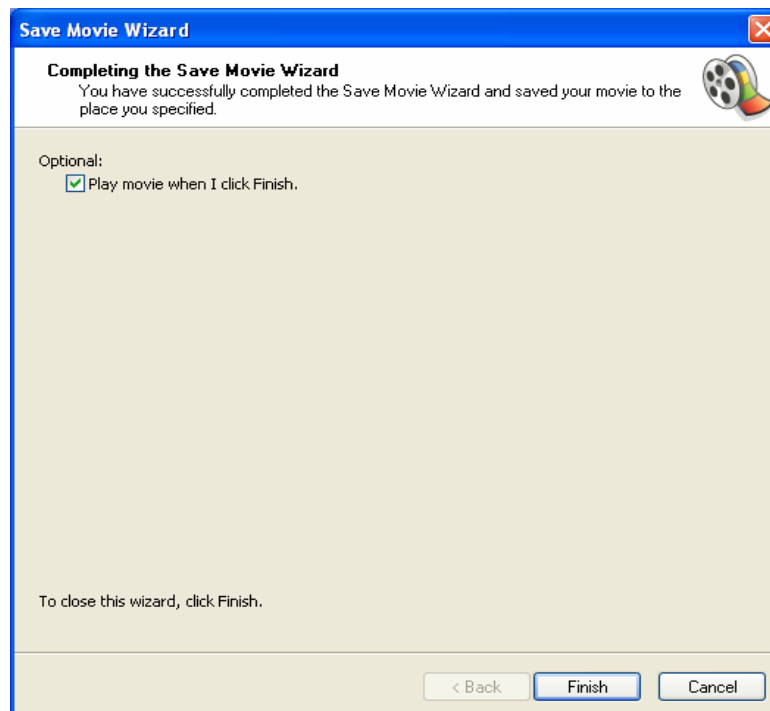
2. The Save Movie Wizard appears. On the **Save Movie File** page, type a name for the movie then click **Next**.



3. On the **Movie Setting** page, click **Next** to accept the default setting of **Best quality for playback on my computer**.

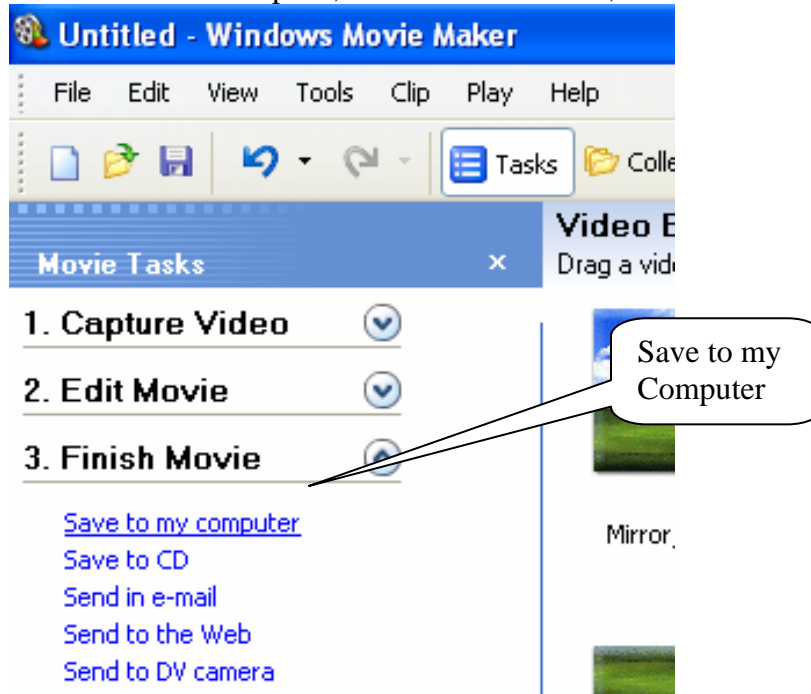


4. Movie Maker saves the movie, which might take several minutes. On the **Completing the Save Movie Wizard** page, click **Finish**. If **Play movie when click Finish** was selected (it is selected by default), the movie will automatically play in Windows Media Player.

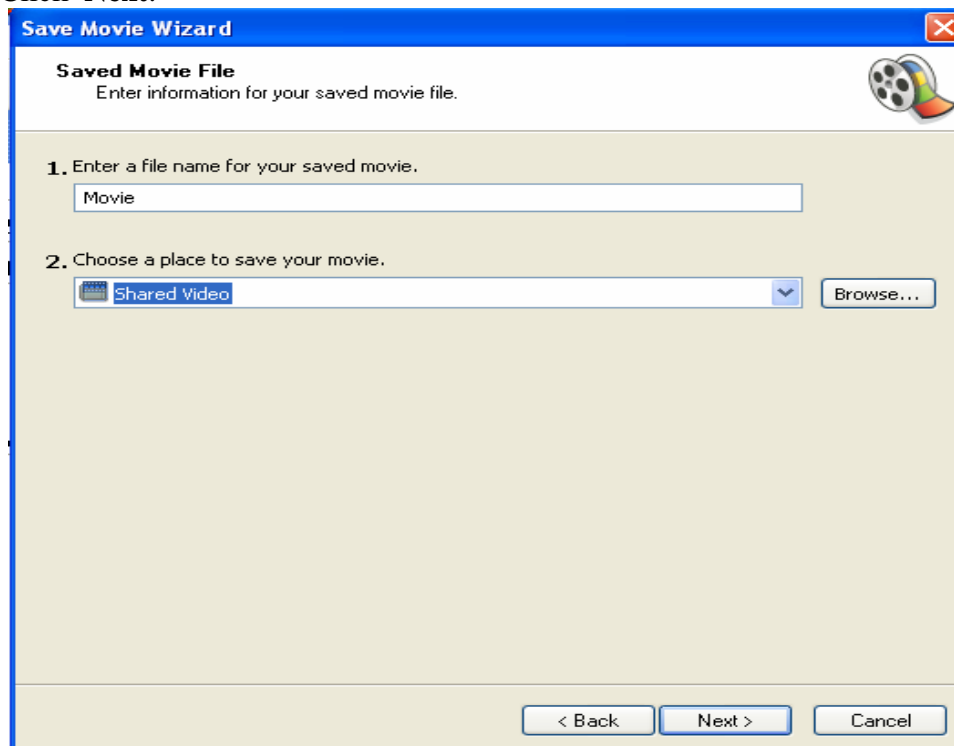


Save your movie to a CD for Student Teaching/Methods/Cohort

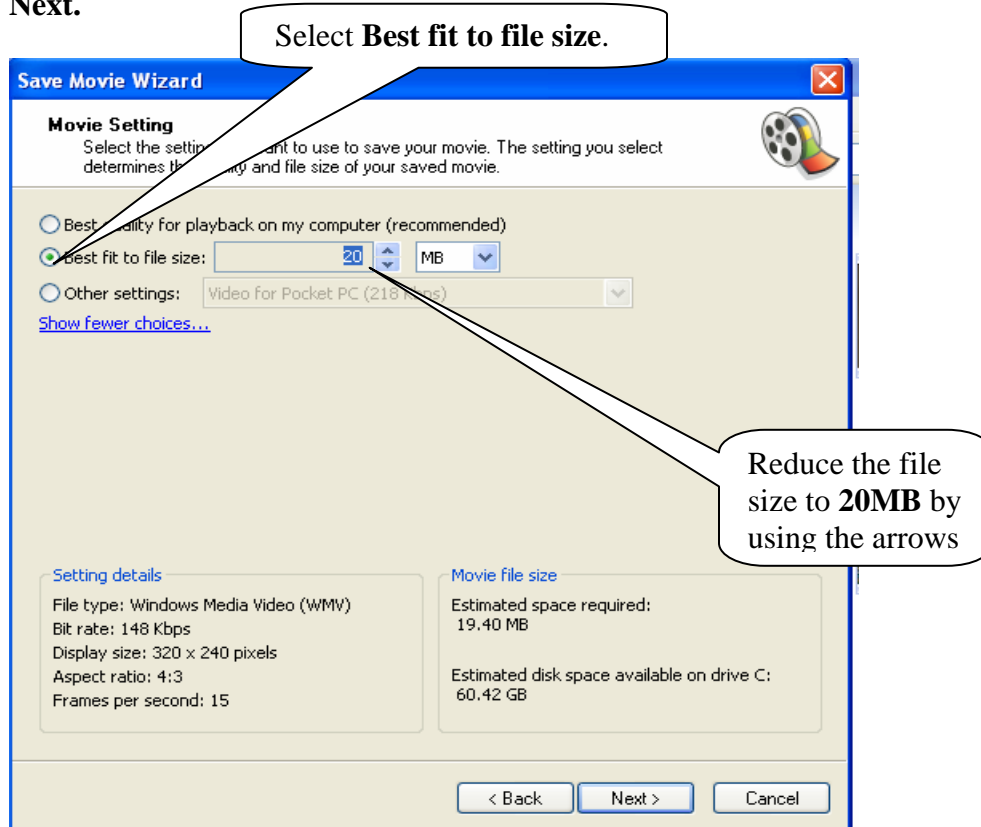
1. Insert a blank, recordable CD into the CD burner.
2. In the **Movie Tasks** pane, under **Finish Movie**, click **Save to my computer**.



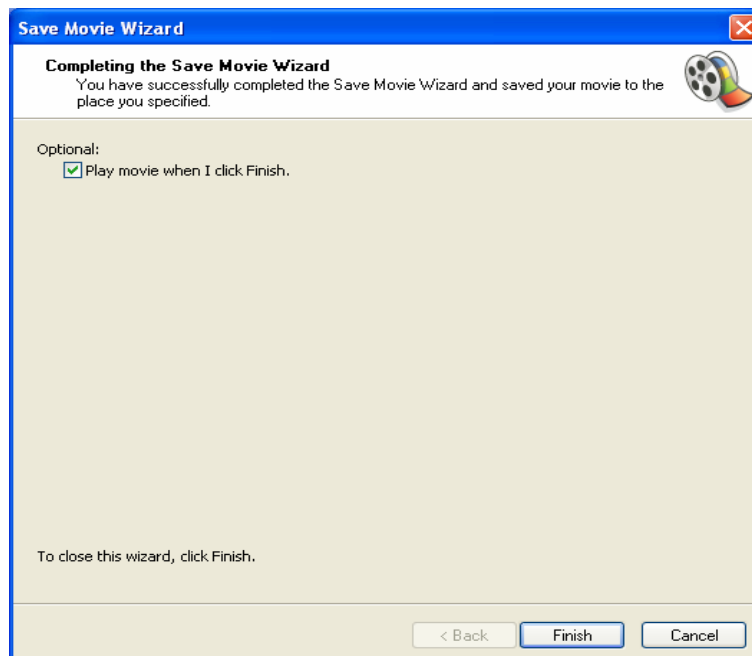
3. The Save Movie Wizard appears. On the **Save Movie File** page, type a name for the movie. You can also choose a folder to save it in by clicking the **Browse** button, but Shared Videos (the default) is usually the best place to save the movie. Click **Next**.



4. On the **Movie Setting** page, click **Show more choices**, then select the **Best fit to file size** option. Reduce the file size to **20MB** by using the arrows and then click **Next**.

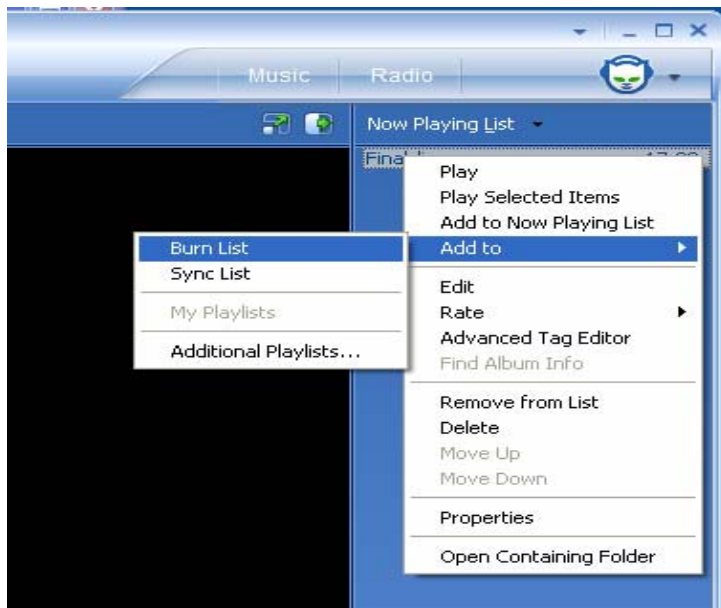


5. Movie Maker saves the movie, which might take several minutes. On the **Completing the Save Movie Wizard**, **MAKE SURE** to select **Play movie when I click Finish**. The movie will automatically play in Windows Media Player.

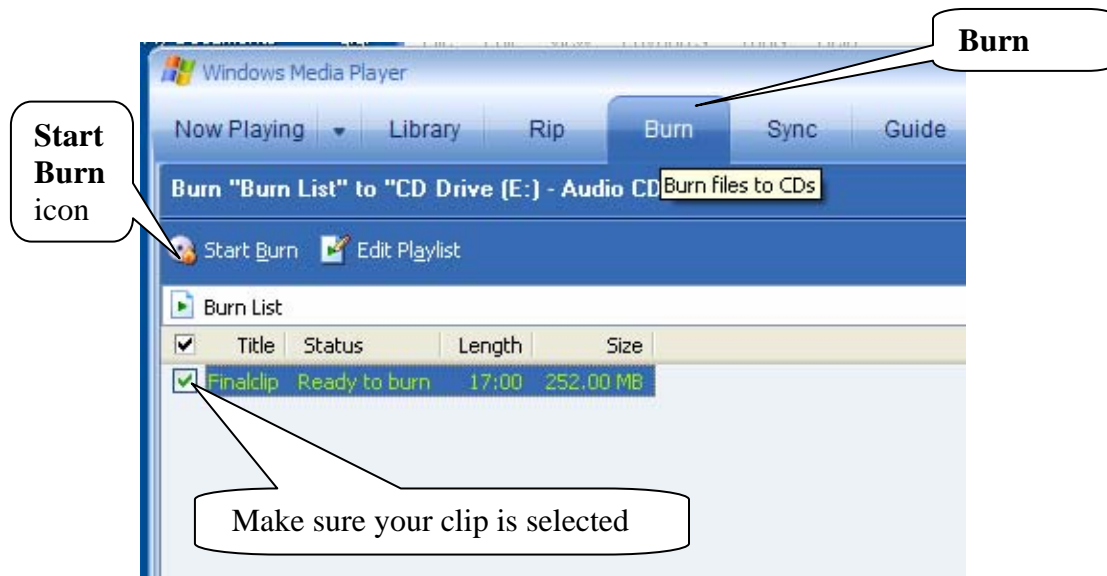


Burning Movie to CD

1. Open CD drive on computer and insert CD.
2. At the **Windows Media Player** page, right click the movie under the **Now Playing List** section and select **Add to Burn list**.



6. Click the **Burn** icon on the **Windows Media Player** tool bar, make sure the clip is **selected** to be burned under **Burn List** and then click the **Start Burn** icon.



7. **Windows Media Player** will now burn your CD, this may take several minutes and then your CD will be ejected.

Project is now complete